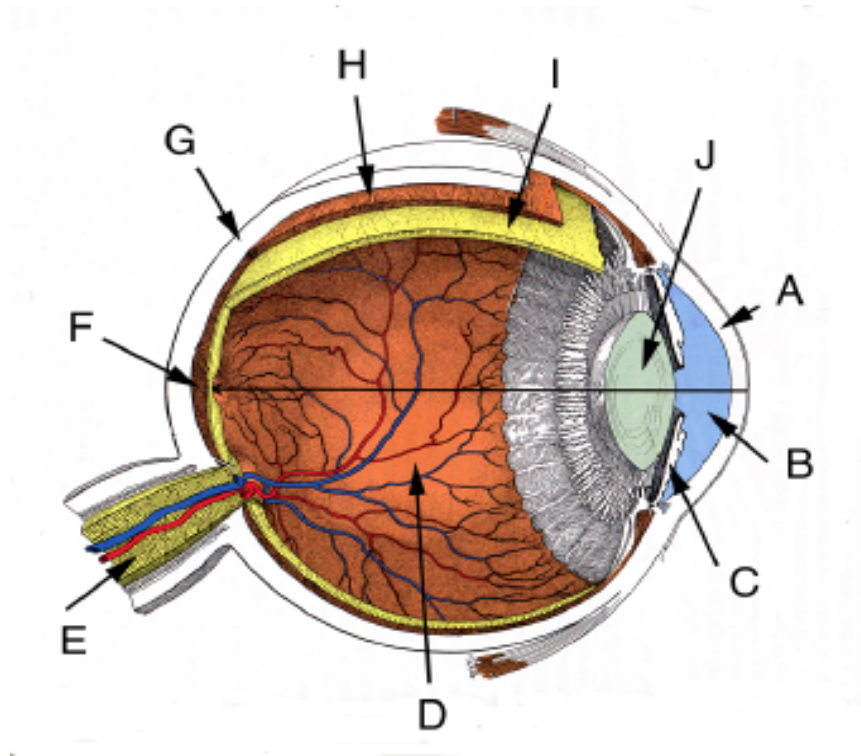


Homework Assignment 2 - 10 Points
Due at beginning of class, Thursday, 5 February 2015

There are two parts to this homework assignment. Each part counts 5 points. Late homework will receive a grade of zero.

Part 1: Provide labels for each of the 10 parts in the drawing of the eye. You may use either Latin or English words. Each label counts 0.5 points for a total of 5 points



- A. _____
- B. _____
- C. _____
- D. _____
- E. _____
- F. _____
- G. _____
- H. _____
- I. _____
- J. _____

